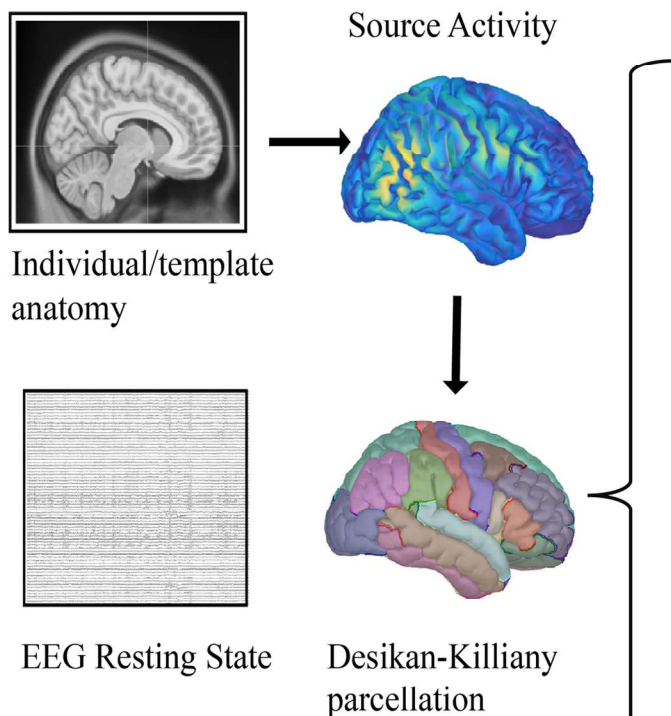
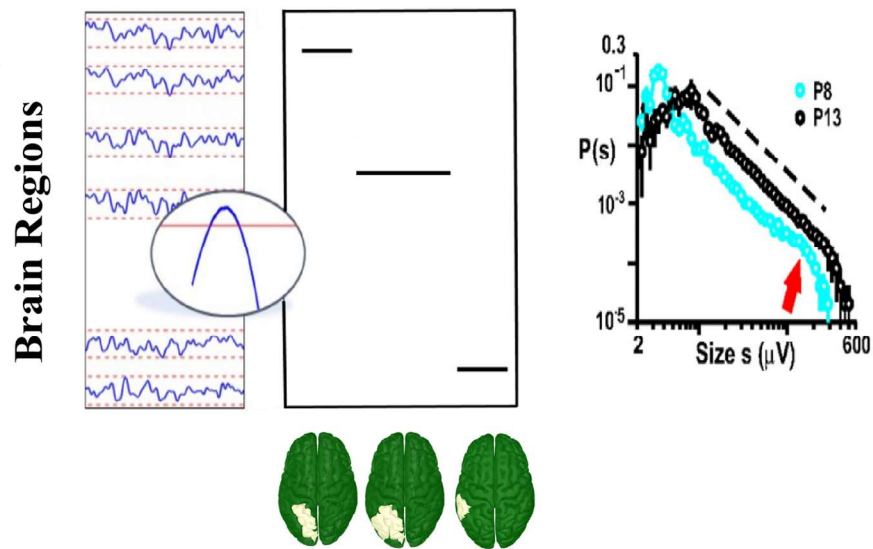


"Caratterizzazione della componente aperiodica in epilessia tramite EEG ad alta densità"

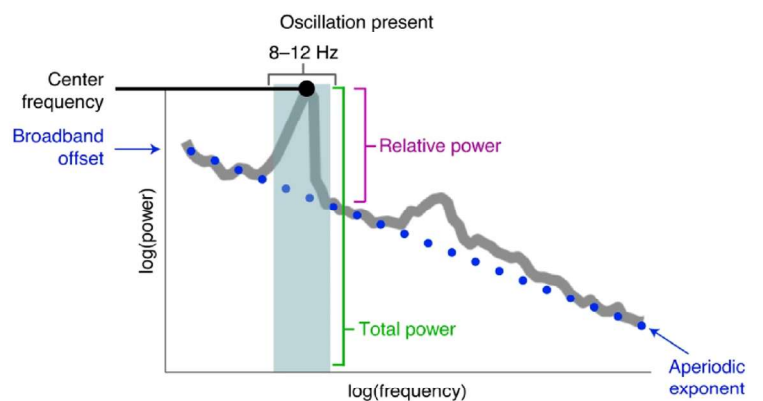
Dr. **Gian Marco Duma**, PhD
IRCCS E. Medea Scientific Institute
Epilepsy Unit, Conegliano (TV)



Neuronal Avalanches



Exponent of aperiodic component



20 dicembre 2023
ore 17:00
Aula Coppo (OCB)